

PART OF NORTH 1/2 OF SEC. 29, T.7N., R.1W., S.L.B. & M.

FAIRFIELD ACRES SUBDIVISION

PLAT I

LOTS 1-5, 17-22

54

TAXING UNIT: 10

NORTH OGDEN CITY

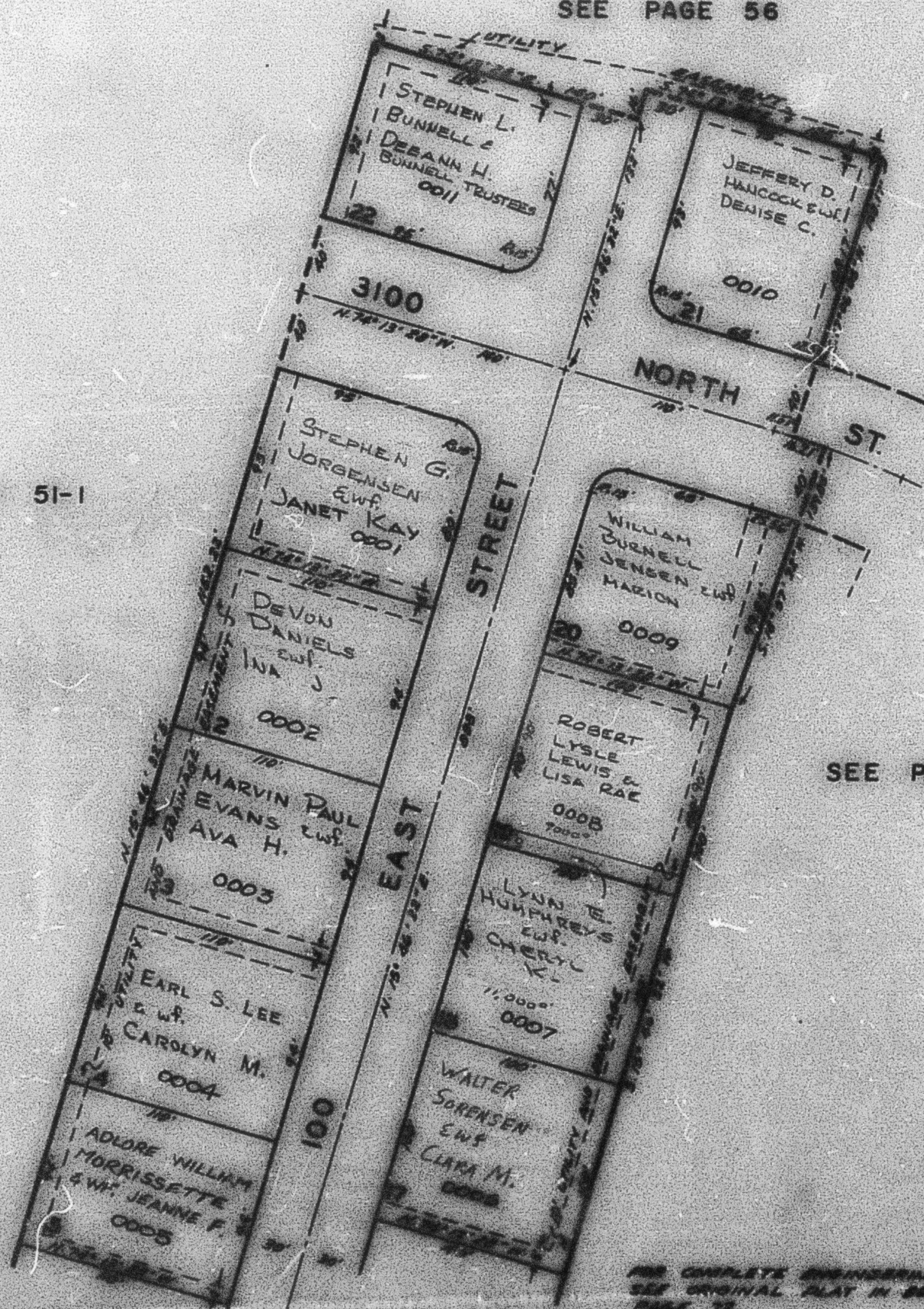
PREFIX: 17-054

SCALE 1" = 60'

SEE PAGE 56

SEE PAGE 51-1

SEE PAGE 102



FOR COMPLETE ENGINEERING DATA
SEE ORIGINAL PLAT IN BOOK 12,
PAGE 72.

SEE PAGE 55